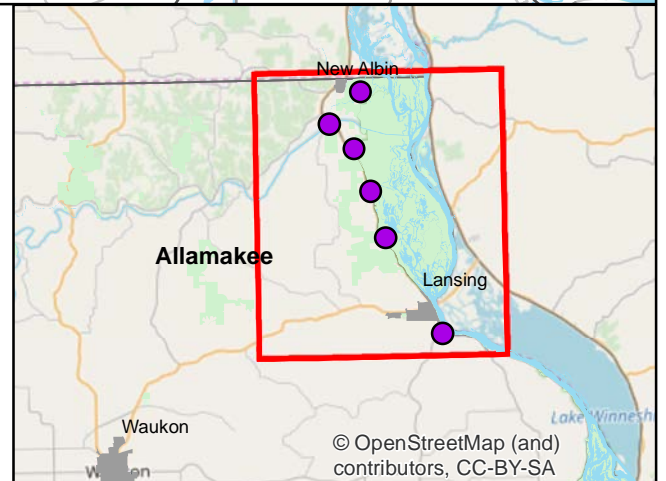
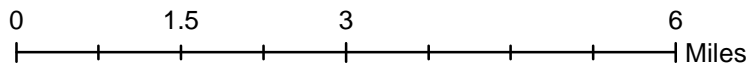
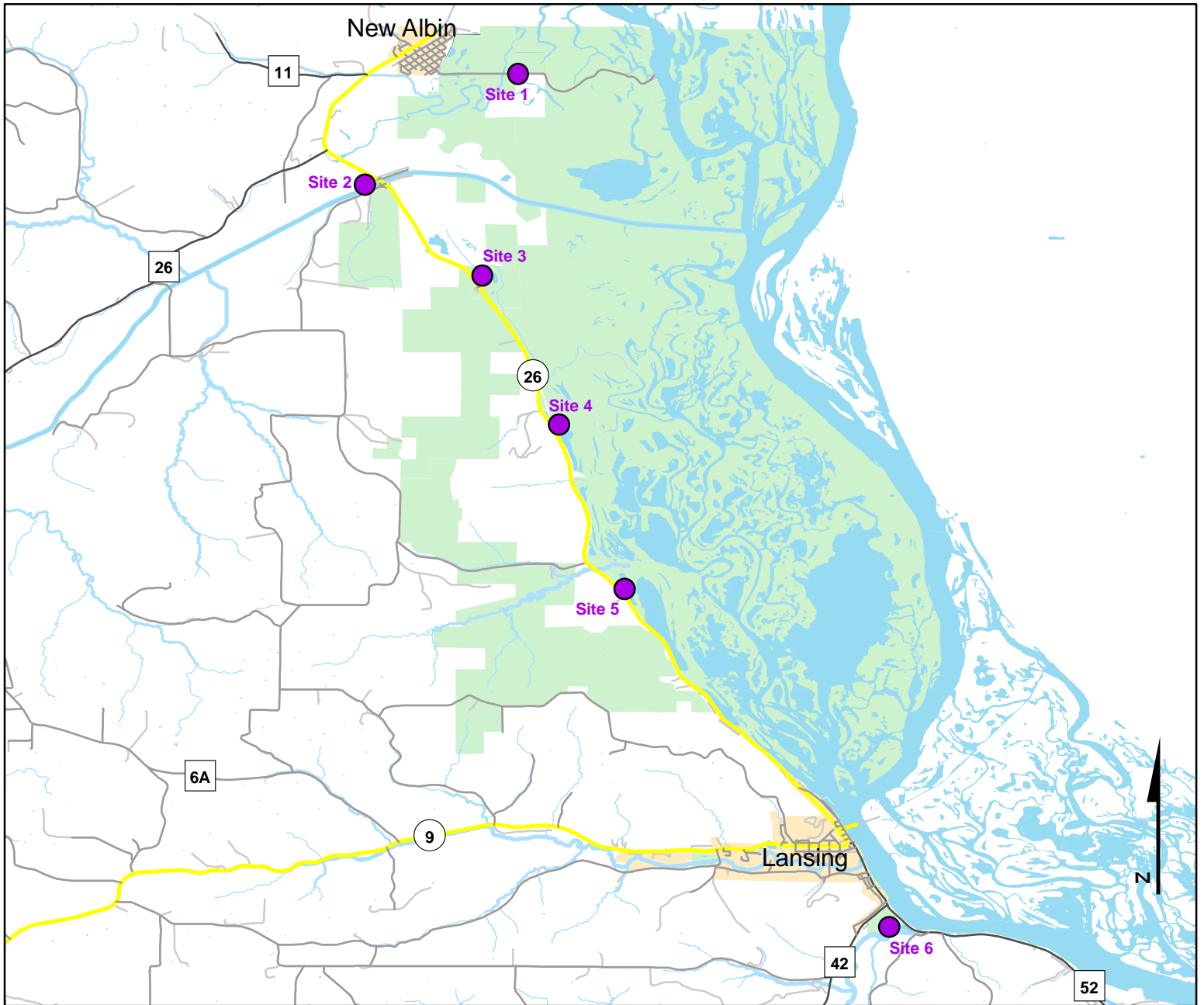




Volunteer Wildlife Monitoring Program (VWMP) Frog and Toad Survey

Route ID: 89 County: Allamakee

Click for Google Maps to Site 1: <https://www.google.com/maps/dir/?api=1&destination=43.492738331,-91.2715410387>

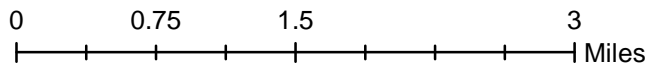
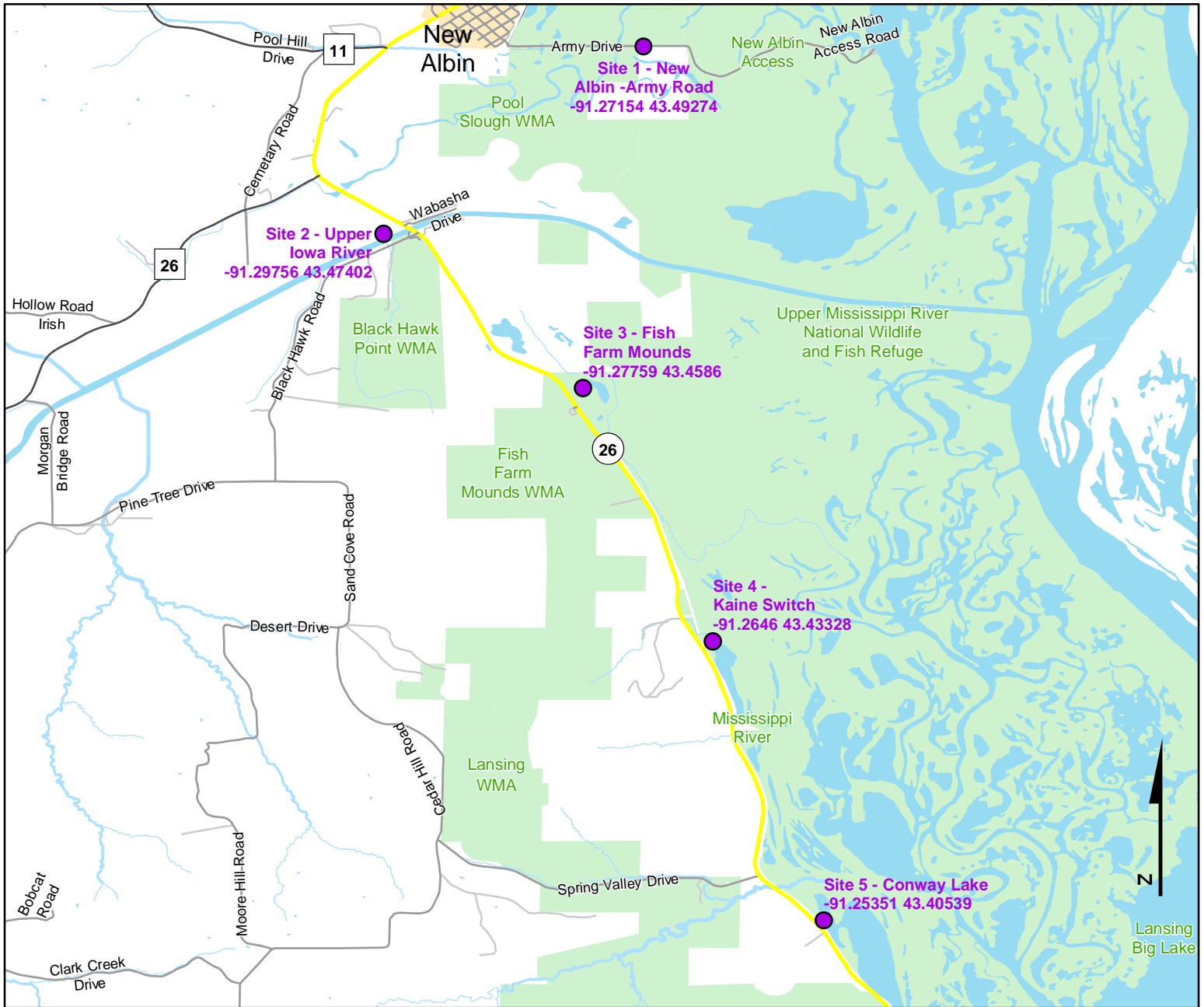




Volunteer Wildlife Monitoring Program (VWMP) Frog and Toad Survey

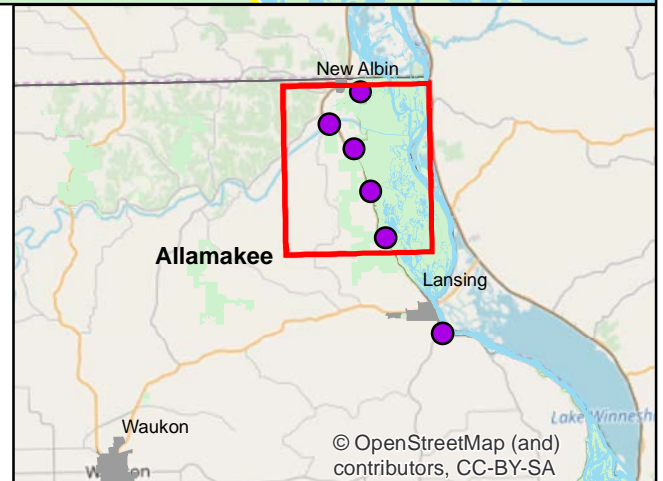
Route ID: 89 County: Allamakee

Click for Google Maps to Site 1: <https://www.google.com/maps/dir/?api=1&destination=43.492738331,-91.2715410387>



Legend

----- Trails



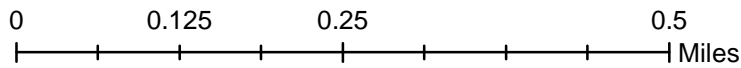
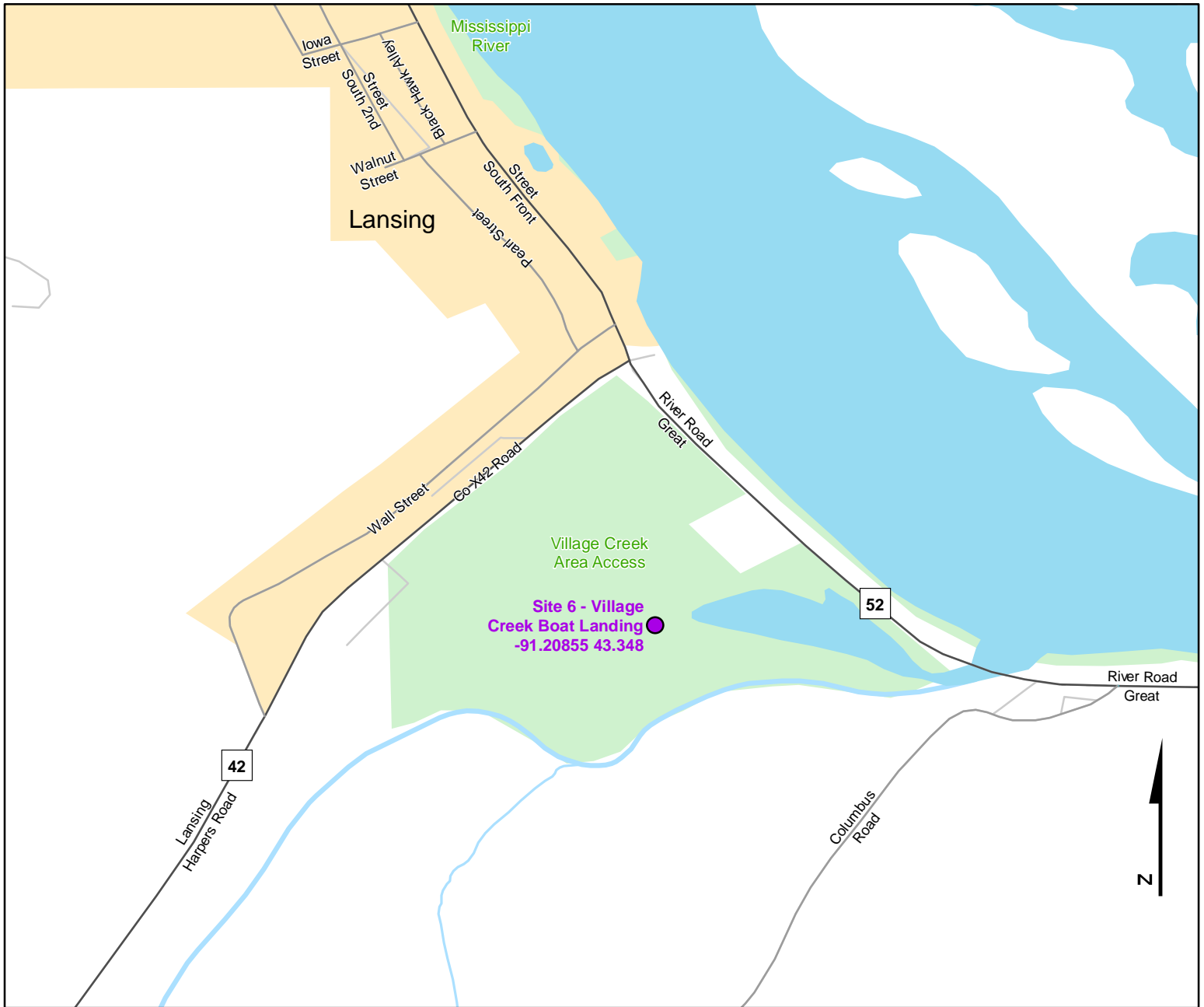
© OpenStreetMap (and contributors), CC-BY-SA



Volunteer Wildlife Monitoring Program (VWMP) Frog and Toad Survey

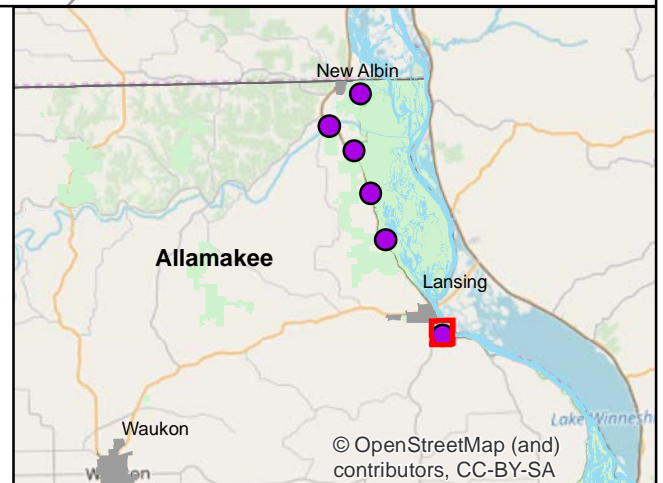
Route ID: 89 County: Allamakee

Click for Google Maps to Site 1: <https://www.google.com/maps/dir/?api=1&destination=43.492738331,-91.2715410387>



Legend

----- Trails





Frog and Toad Call Survey Route Description

Route ID **89**

Established: 1992

Site Number	Name	County	Latitude	Longitude	Directions
1	New Albin -Army Road	Allamakee	43.4927383	-91.271541	State Parking Lot on Army Road. Detailed Map available.
2	Upper Iowa River	Allamakee	43.474022	-91.2975566	Canoe Landing on Upper Iowa just west of Highway 26.
3	Fish Farm Mounds	Allamakee	43.4585961	-91.2775944	On East side of Hwy 26 accross from Fish Farm Mounds. Marsh is ~ 200 yds from Highway.
4	Kaine Switch	Allamakee	43.4332779	-91.2645982	Gravel Pull-off. Cross tracks and marsh is to the south.Difficult to Access. Just south of refuge parking lot.
5	Conway Lake	Allamakee	43.4053852	-91.2535143	Very North end of Lake on Highway 26.. Small Gravel Pull off at the curve in 26.
6	Village Creek Boat Landing	Allamakee	43.3479987	-91.2085473	State Boat Landing on south side of town.